

# TROJAN PROFESSIONAL

## LUXURY VINYL PLANKS



## TROJAN PROFESSIONAL VINYL

Vinyl flooring is durable, versatile, comfortable and stylish. Our range of Trojan PROFESSIONAL vinyl planks meet our company objectives and standards, which are to exceed our customers' expectations in product quality and value for money.

Trojan PROFESSIONAL planks are produced to the highest quality, ensuring you have a floor that is impressive in how it looks and performs.

ATTRACTIVE. DURABLE. ECONOMICAL.



THE POSSIBILITIES ARE  
ENDLESS WITH TROJAN  
PROFESSIONAL

- Residential
- Retail
- Commercial



## WHY VINYL?



Acoustically-rated



Realistic look and feel of timber



Cost effective



Commercially-rated durable surface



Easy to clean and maintain

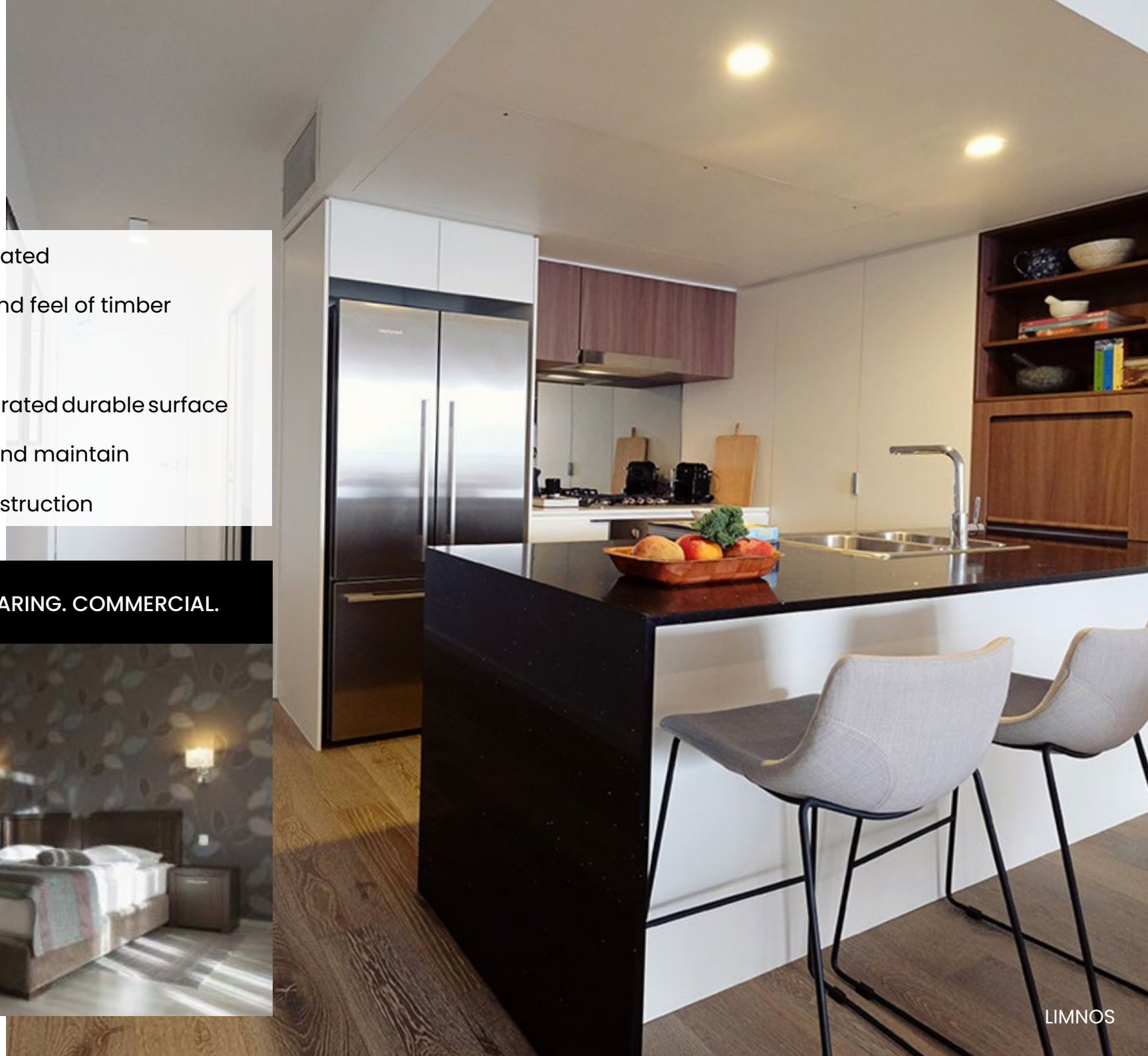


Multi-layer construction

**STYLISH. HARD-WEARING. COMMERCIAL.**



CRETE



LIMNOS

## PERFECTION IN PLANKS

Our planks are available in various options from the traditional timber look to distressed and limed effects. Each plank is finished with a textured coating and micro-bevelled edge. There is sure to be one that suits your design objectives.

*While we have a small selection of our top selling timber, stone and carpet look décors shown here, we have an extensive range including various plank sizes, widths, surface variations and textures.*

*Please visit our website to view our full collection.*

## PLANK & VINYL OPTIONS

228.6 x 1219.2

228.6 x 1828.8

189 x 1229

189 x 1855

914.4 x 914.4

620 x 620

304.8 x 609.6

457 x 457

## TIMBER LOOK COLLECTION

CRETE

LIMNOS

CAPRI

ELM

MOONDUST

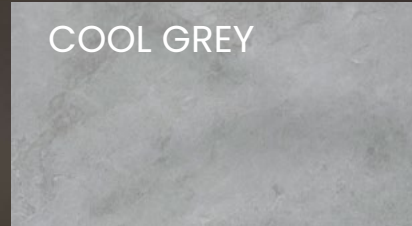
SOHO

KEA

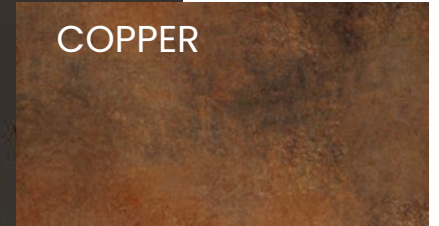


## STONE LOOK COLLECTION

COOL GREY



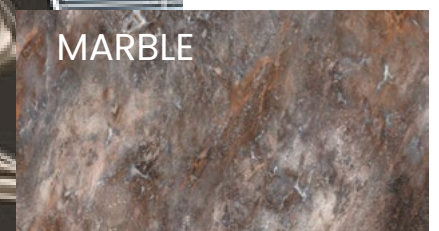
COPPER



SANDSTONE

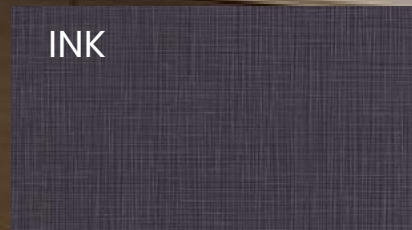


MARBLE

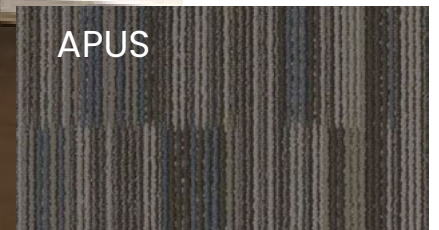


## CARPET LOOK COLLECTION

INK



APUS



GALLEGO



STOCKHOLM



VOSS

## ETHICALLY PRODUCED ENVIRONMENTALLY SAFE

Next 13 recognises our responsibility for assisting in the protection of the environment by sourcing and working only with manufacturers who have an accredited Environment Management System.

## HEALTHY AND SAFE

Trojan PROFESSIONAL vinyl meets the requirement to assure the safety and health of consumers and the protection of the environment.

## ACOUSTICALLY SOUND

Trojan PROFESSIONAL vinyl range encompasses both dry back and acoustic-backed vinyl options.

## EASY INSTALLATION

Provided the sub-floor is structurally sound, clean and level, Trojan PROFESSIONAL can be installed on all types of sub-floors.

- Easy to cut - score and snap with a stanley knife/drop saw
- Bevelled edge for a clean join between planks

For small areas, Trojan PROFESSIONAL can be loose laid and does not require adhesive. In areas greater than 30m<sup>2</sup> or areas subject to high temperature changes or direct sunlight, it is recommended that permanent bond adhesive be used during the installation process.

For easy cleaning, simply mop your vinyl floor with a general floor cleaner - never use harsh chemicals or corrosive cleaners on the surface of Trojan PROFESSIONAL.



*Durable  
Economical  
Fashionable*

Your new vinyl flooring comes with a LIFETIME Structural Warranty & a 20 Year Wear-and-Tear Warranty.

## LIFETIME STRUCTURAL WARRANTY



LIFETIME Structural Warranty refers and applies to the structural integrity of the vinyl planks - guaranteeing no delamination, disintegration or structural deterioration as a direct result of a production fault over the planks lifetime.

## ENGINEERED TO LAST

Trojan PROFESSIONAL's 20 Year Wear-and-Tear Warranty guarantees against the visible wearing-out of the decorative pattern of your vinyl floor. This gives you peace of mind that your luxury vinyl planks are built to last.

Conditions apply. For a complete copy of the warranty, visit our website: [www.next13.com.au](http://www.next13.com.au)



## ACOUSTICALLY-RATED FLOORING

So quiet you will hardly notice you are walking on it!

- ✓ In typical developments Trojan PROFESSIONAL has exceeded industry acoustic requirements for high-rise residential units.\*
- ✓ Can be installed without the need for a secondary underlay - offering a considerable cost advantage during construction.
- ✓ Additional secondary acoustic underlay available if required.



Please check body corporate requirements before installation as not all sites are the same. Where acoustic requirements are critical to your design objectives we would always recommend an affordable acoustic test be conducted on site.

To ensure the optimum performance of your floor and full coverage of the product warranty, please adhere to all instructions relating to the subfloor, installation environment, installation method and care and maintenance guide. For more information including warranty conditions, care instructions, installation advice and technical data sheets, please visit our website or contact us directly.

Any samples viewed or provided are a guide to colour only and not a guarantee that all planks are the same.

Please note: pictures contained in this brochure are for illustration purposes only. Print and electronic depictions of the floor may differ to the actual product colour.



07 3861 4422



[sales@next13.com.au](mailto:sales@next13.com.au)



[www.next13.com.au](http://www.next13.com.au)



1/67 Araluen Street, Kedron,  
QLD 4031, Australia